

Control Valves Y 2

DN50 - DN800
PN10 - PN25
ANSI 125-300 lb/sq.in



Main applications:

- pressure- / reducing / sustaining
- pressure- / flow / level control
- water up to 25 bar/60°C

Valve characteristics:

- sensitive and close control
- globe type valve - low headloss in fully open position
- pilot valve for downstream pressure 1-20 bars
- seat not subject to cavitation
- various executions for water supply systems



Common Types of Control Valves

Special Solutions on Request

Type Y 2 PR - Pressure Reducing Valve

The valve maintains a preset downstream pressure, regardless of upstream pressure or flow rate fluctuation. The main valve is controlled by either a 3-way pilot valve (allowing full opening when downstream pressure drops below the set-point), or by a 2-way pilot valve (creating a pressure differential in any condition).



Type Y 2 PS - Pressure Sustaining Valve

The valve maintains upstream pressure, regardless of flow rate variations. The valve will be in the "closed" position if the upstream pressure drops below the set-point and will fully open when the upstream pressure exceeds the set-point.



Type Y 2 FR - Flow Rate Control Valve

The valve limits the flow rate in the network to a preset level, regardless of upstream pressure variations. The valve fully opens when the flow rate drops below the set-point.



Type Y 2 AL - Altitude Control Valve

The main valve is controlled by a highly sensitive pilot, located outside the tank. The pilot opens or closes the valve in response to the static pressure of the water. The pilot allows for differential adjustments between the maximum and minimum level. Optional Addition: Surge-Preventing Closure (SP).



Control Valves Y 2

Materials

Item	Standards	Alternatives
body, cover	GGG 40/50	-
body seat	bronze/Stainless	-
guide	bronze	-
diaphragm	neoprene	EPDM
piston	Ductile / Bronze	-
pilote valve	bronze	stainless steel
seal ring	EPDM	-

Internal Corrosion Protection

Type Y 2[k]: Non toxic fusion bonded epoxy 300 microns

External Corrosion Protection

Standards: Shot blasted SA 2.5. Fusion bonded epoxy 300 microns

Standards for Supply

- delivery conditions: DIN 3230 final tests AG, BA, BN
- overall length: DIN 3202 F1, ISO 5752 series 1
- flange connection: DIN 2501 PN 10/16 / 25
- flange ANSI: B 16.5 - 125 / 150 / 300 lb/sq.in
- remark:

Type Code: Y 2

PR - Pressure Reducing Valve

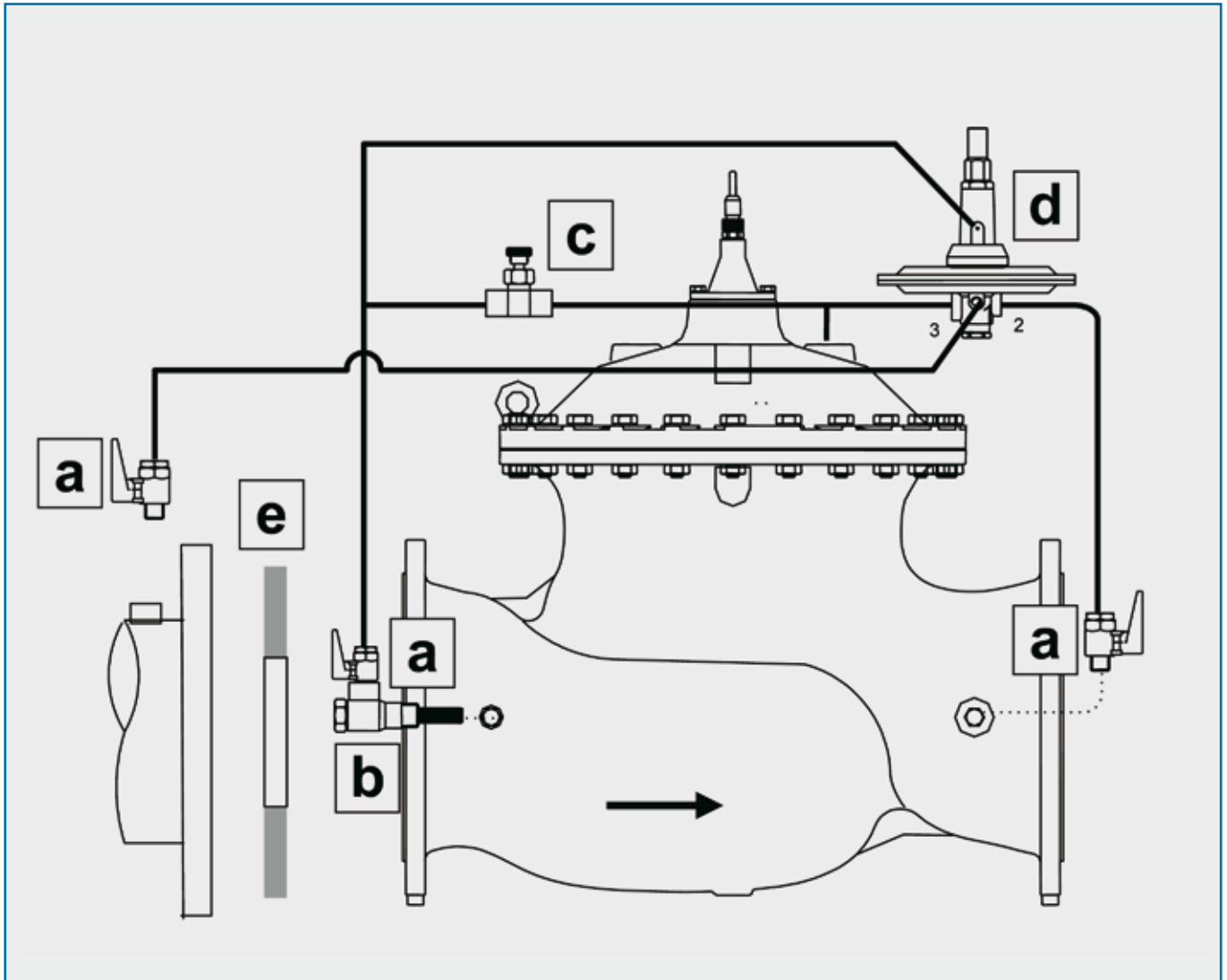
PS - Pressure Sustaining Valve

FR - Flow Rate Control Valve

AL - Altitude Valve

Control Valve Y 2

Flow Rate Control Valve



PART LIST

- a. 2-way cock ball valve.
- b. Self-flushing, inline, SST control filter.
- c. Needle valve.
- d. Differential high sensitivity pilot valve
- e. Pressure gauge.

The standard valve contains an Linear Throttling Plug enabling stable regulation at low flow rate and low head losses at high flow rates



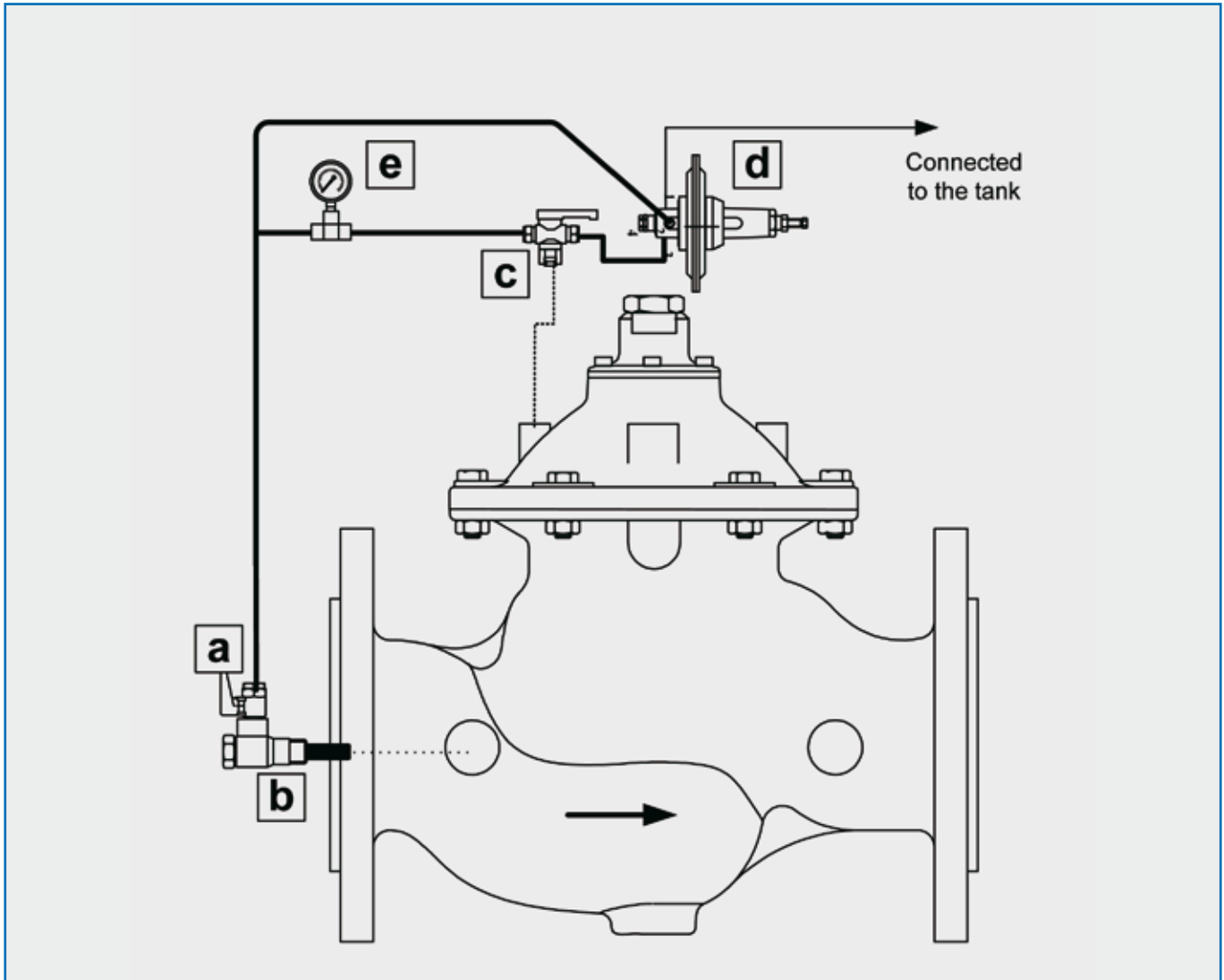
Schnittzeichnung
Y 2
Rev. 2 / 23.06.2008

S+S Armaturen GmbH
FABRICATION | SALES | SERVICE

S+S Armaturen GmbH • Unterbüscherhof 29 • 42799 Leichlingen, Germany
Phone: +49 -21 74 -78 47 -0 • Fax: +49 -21 74 -78 47 -28
info@sus-armaturen.de • www.sus-armaturen.de

Control Valve Y 2

Altitude Valve



PART LIST

- a. 2-way cock ball valve.
- b. Self-flushing, inline, SST control filter.
- c. Manual closing valve.
- d. Altitude control pilot valve
- e. Pressure gauge.

The standard valve contains an Linear Throttling Plug enabling stable regulation at low flow rate and low head losses at high flow rates



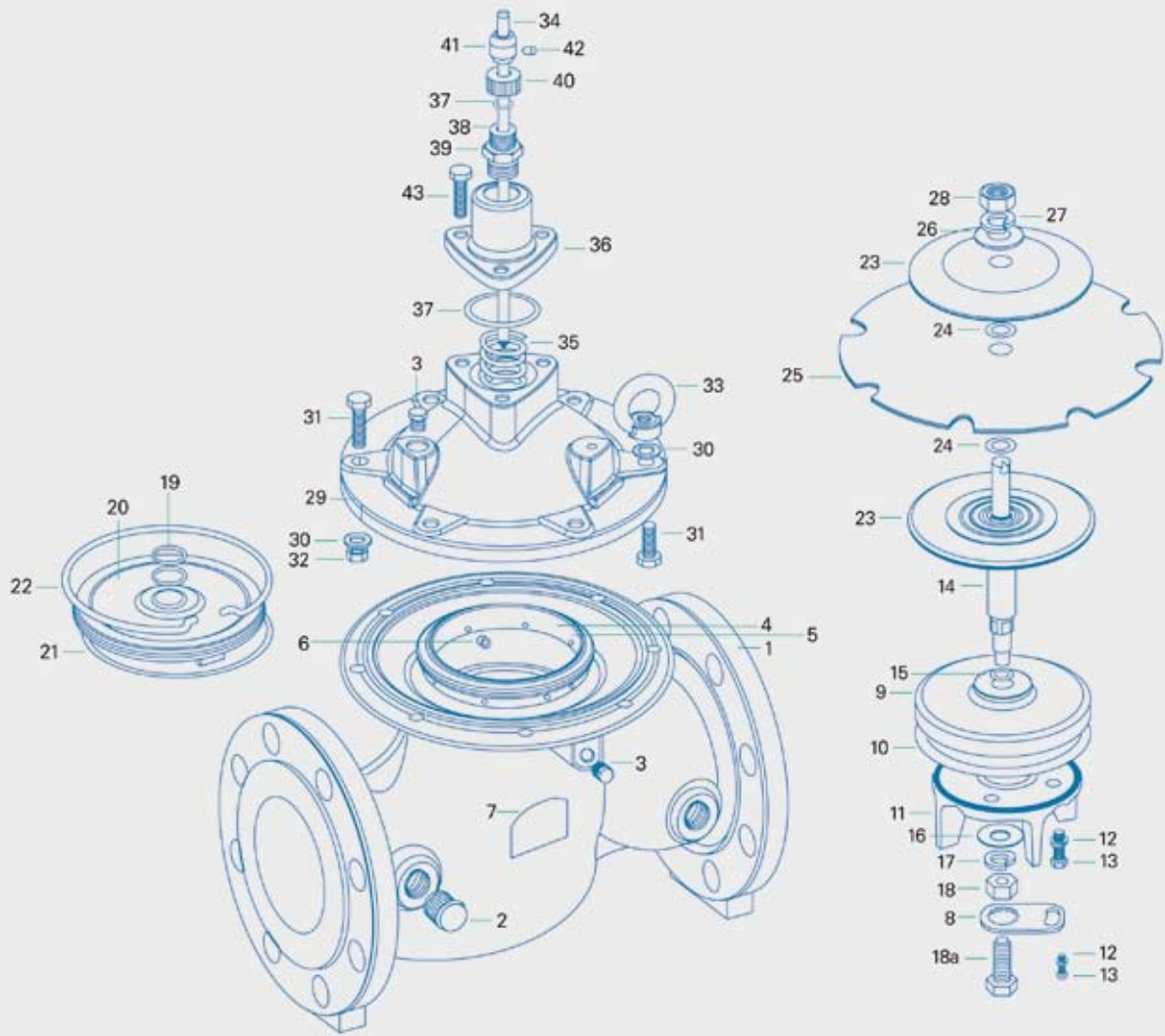
Schnittzeichnung
Y 2
Rev. 2 / 23.06.2008

S+S Armaturen GmbH
FABRICATION | SALES | SERVICE

S+S Armaturen GmbH • Unterbüscherhof 29 • 42799 Leichlingen, Germany
Phone: +49 -21 74 -78 47 -0 • Fax: +49 -21 74 -78 47 -28
info@sus-armaturen.de • www.sus-armaturen.de

Control Valve Y 2

Pilot operated



Pos. Item	Designation	Standard Typ Y 2	Pos. Item	Designation	Standard Typ Y 2	Pos. Item	Designation	Standard Typ Y 2
1	Body	Ductile Icon	15	O-Ring	Rubber	28	Nut	SSt316
2	Plug	SS316	16	Washer	SST316	29	Bonnet	GGG50
3	Plug	SS316	17	Spring Washer	SST316	30 (11/2"-8")	Washer	Steel (SST)
4	Seat	SST316L	18 (3", 4")	Nut	SST316	31 (11/2"-8")	Bolt	Steel (SST)
5	Seat Locking Bolt	SST316	18a***	Bolt	SST316	32 (11/2"-8")	Nut	Steel (SST)
6	Seat Locking Bolt (Long)	SST316	19*	O-Ring	Rubber	33	Lifting Ring	Steel
7	ID Tag	SS	20*	Seperating Disc	Bronze	34**	Position Indicating Rod	SST304
8***	Bolt Safety Disc	SST	21*	O-Ring	Rubber	35	Spring	SST302
9	Disc/Piston	Ductile Iron	22*	Lock Spring	SST302	36	Guiding Cover	Bronze
10	Seal	Rubber	23	Diaphragm Disc	Ductile Iron	37	O-Ring	EPDM
11	Seal Guide	Bronze + SST	24	O-Ring	EPDM	38	O-Ring	EPDM
12	Spring Washer	SST316	25	Diaphragm	EPDMr	39	Adapter	Bronze
13	Bolt	SST316	26	Washer	SST316	40	Air release Nut	Bronze
14	Shaft	SST316	27	Spring Washer	SST316			



Schnittzeichnung
Y 2
Rev. 2 / 23.06.2008

S+S Armaturen GmbH
FABRICATION | SALES | SERVICE

S+S Armaturen GmbH • Unterbüscherhof 29 • 42799 Leichlingen, Germany
Phone: +49-21 74-78 47-0 • Fax: +49-21 74-78 47-28
info@sus-armaturen.de • www.sus-armaturen.de



Y 2 Catalogue
Rev. 2 / 20.06.2008

S+S *Armaturen GmbH*

FABRICATION | SALES | SERVICE

S+S Armaturen GmbH • Unterbüscherhof 29 • 42799 Leichlingen, Germany
Phone: +49 -21 74 -78 47 -0 • Fax: +49 -21 74 -78 47 -28
info@sus-armaturen.de • www.sus-armaturen.de